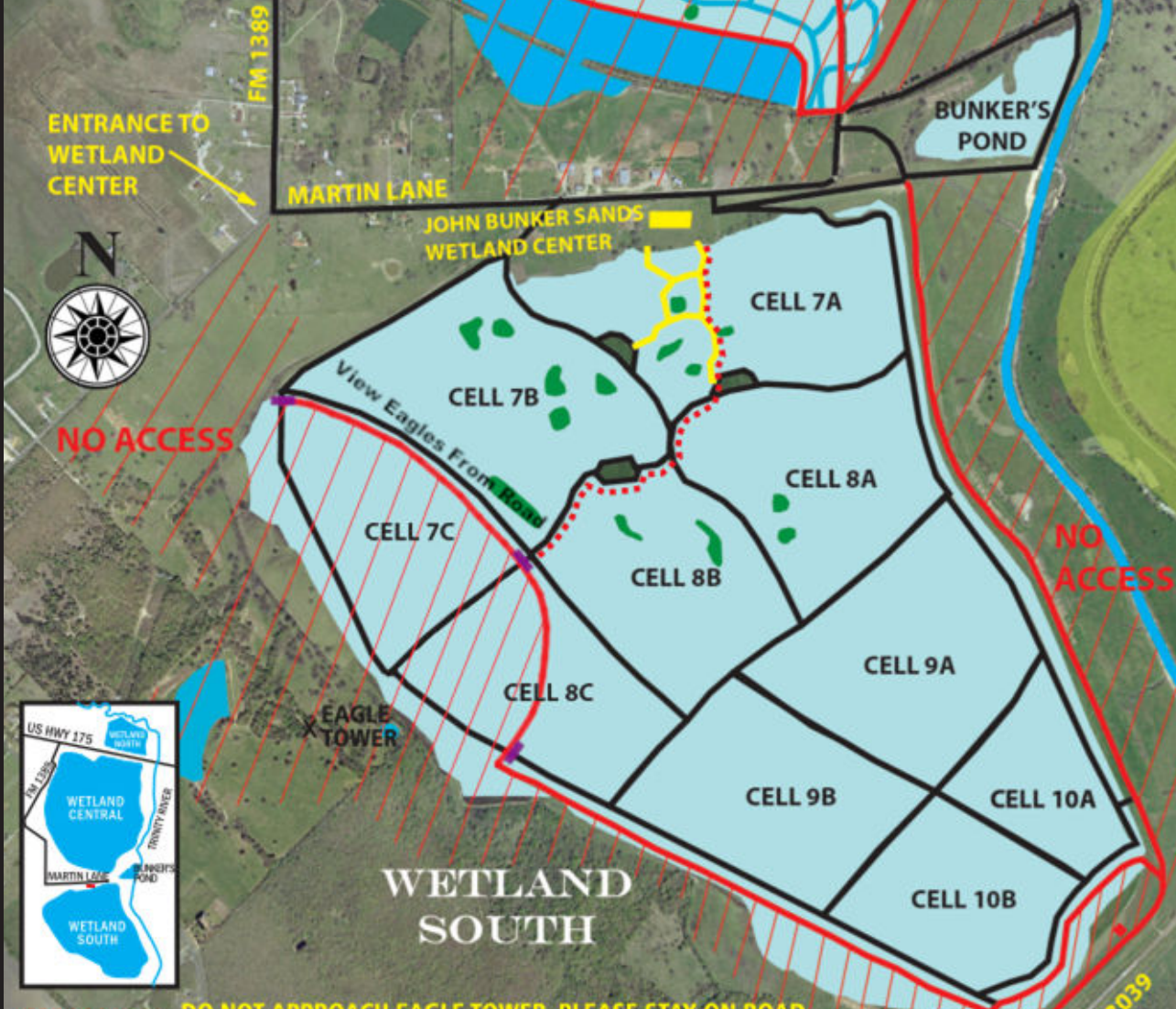


WETLAND CENTRAL



- - - - - DO NOT APPROACH EAGLE TOWER. PLEASE STAY ON ROAD
- WETLAND
- LAKE/RIVER
- BOARDWALK
- ACCESS PATH & ROADS
- BARRICADES
- NO ACCESS - RESTRICTED AREA



NTMWD WETLAND PROJECT

Welcome to the

John Bunker Sands Wetland Center

You are free to walk the levees of the South Side of the East Fork Wetland Project. As you are out, please be sure to follow the following recommendations:

- Wear closed toed shoes and be aware of uneven surfaces when walking. Foot Traffic only. Handicap Accessible.
- Take enough water for the amount of time you will be out in the Wetland.
- Leave no trace, take only pictures.
- Please do not feed the wildlife.
- Please return to the Wetland Center by 3:45 p.m. The Center closes at 4:00 p.m.

Public Hours

Tuesday - Friday, 9 am - 4 pm, Saturday, 7 am - 4 pm

\$5 per person, \$4 Seniors, Kids 12 and under free

Education Programs

Tuesday-Friday 9am - 4 pm

Call or email to make an appointment

John Bunker Sands Wetland Center
 655 Martin Lane · Seagoville, TX 75159
972-474-9100
 contact@wetlandcenter.com
www.wetlandcenter.com

Find Us On facebook Follow Us On Twitter